

## BRIEFING SESSION

<b>Date of Workshop</b>	Tuesday 16 May 2023
<b>Time Start (approx)</b>	1.00pm
<b>Subject</b>	See below list
<b>Presenter(s)</b>	
<b>Session</b>	Open to the public

## PURPOSE

To provide Members with an update on the below 5 topics.

## BRIEFING SESSION COVER SHEET

<b>Date of Workshop</b>	Tuesday 16 May 2023
<b>Time Start (approx)</b>	1.00pm
<b>Subject</b>	
<b>Presenter(s)</b>	Craig Nixon from Department for Environment & Water
<b>Session</b>	Open to the public
<b>Attachments</b>	1. Remarkable Southern Flinders Project

### PURPOSE

To provide Members with an update on the below 5 topics.

### DISCUSSION

Members were provided with an update on the following:

- 2023 Community Survey – Results
- Community Halls (Council resolution from 27/2/23)
- Council assets (land) strategy
- Remarkable Southern Flinders Project (overview & update)
- Legatus

### SPEAKERS

Craig Nixon, National Parks and Wildlife Manager, Department for Environment & Water

Sam Johnson, Chief Executive Officer

### THE BRIEFING IS OPEN TO THE PUBLIC

The cover sheet and attached documents are public documents.



Remarkable  
Southern Flinders  
Project

---

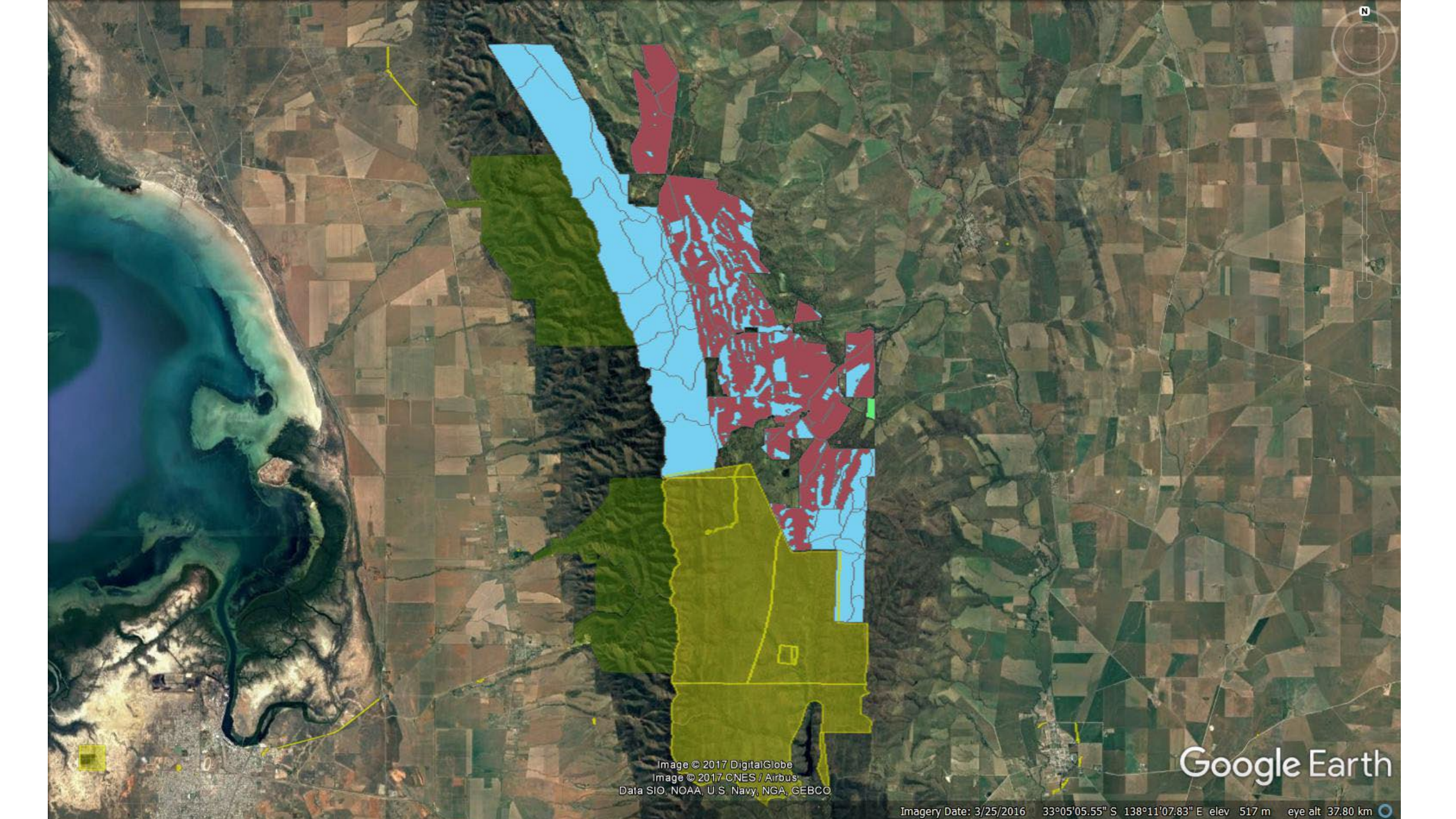


Image © 2017 DigitalGlobe  
Image © 2017 CNES / Airbus  
Data SIO, NOAA, U.S. Navy, NGA, GEBCO

Google Earth

Imagery Date: 3/25/2016 33°05'05.55" S 138°11'07.83" E elev 517 m eye alt 37.80 km

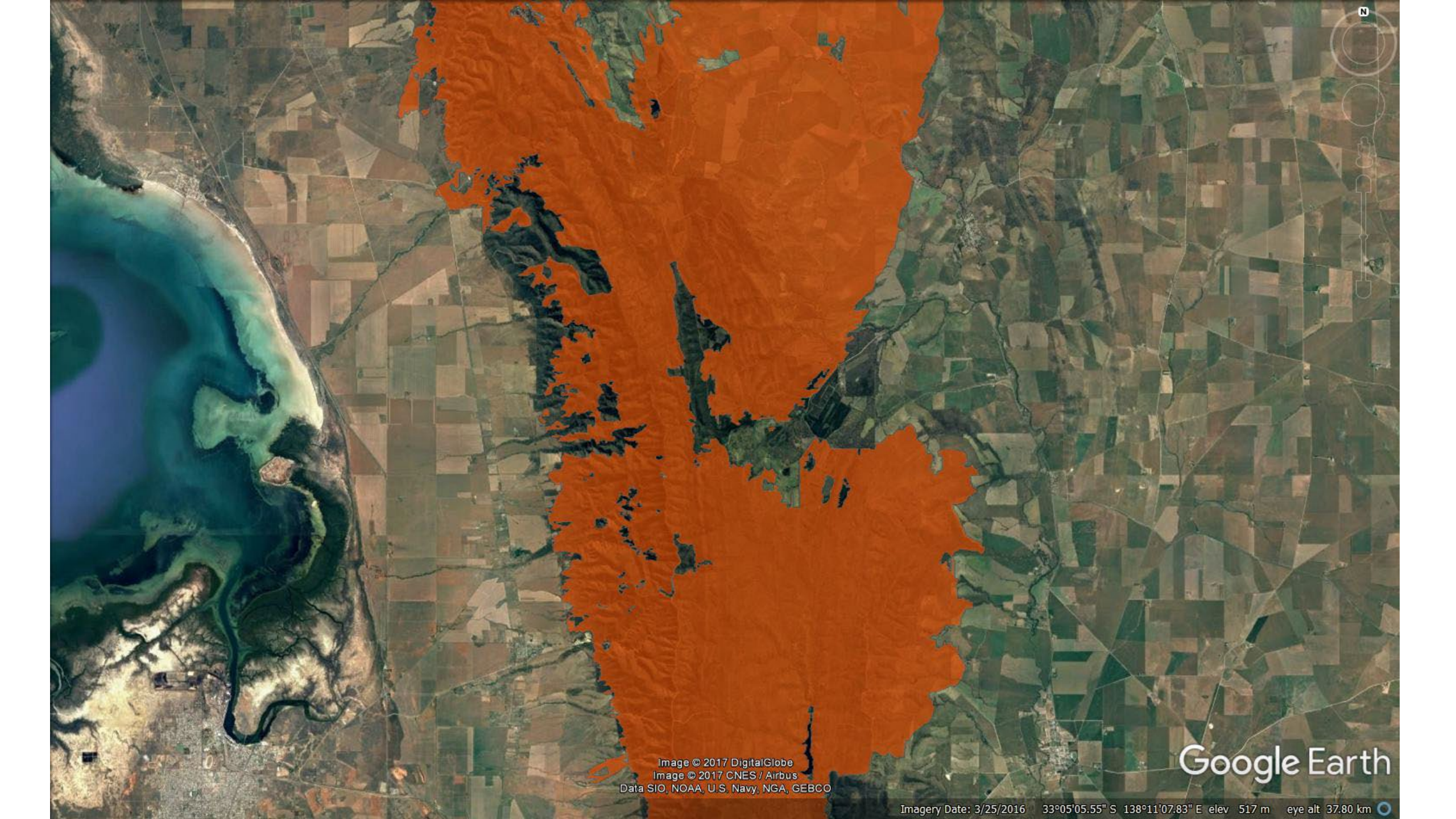


Image © 2017 DigitalGlobe  
Image © 2017 CNES / Airbus  
Data SIO, NOAA, U.S. Navy, NGA, GEBCO

Google Earth

Imagery Date: 3/25/2016 33°05'05.55" S 138°11'07.83" E elev 517 m eye alt 37.80 km



Image © 2017 DigitalGlobe  
Image © 2017 CNES / Airbus  
Data SIO, NOAA, U.S. Navy, NGA, GEBCO

Google Earth

Imagery Date: 3/25/2016 33°05'05.55" S 138°11'07.83" E elev 517 m eye alt 37.80 km

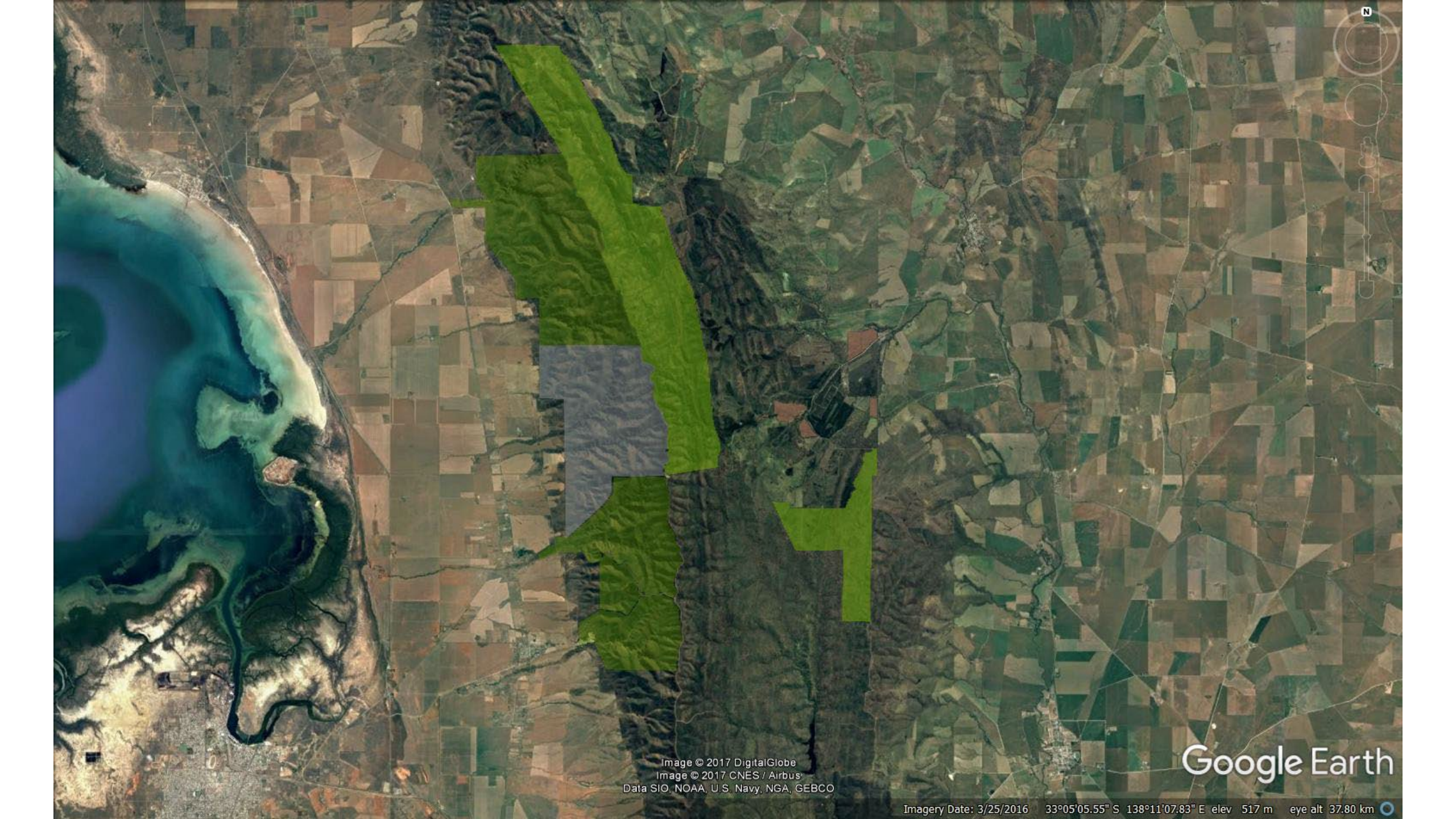


Image © 2017 DigitalGlobe  
Image © 2017 CNES / Airbus  
Data SIO, NOAA, U.S. Navy, NGA, GEBCO

Google Earth

Imagery Date: 3/25/2016 33°05'05.55" S 138°11'07.83" E elev 517 m eye alt 37.80 km

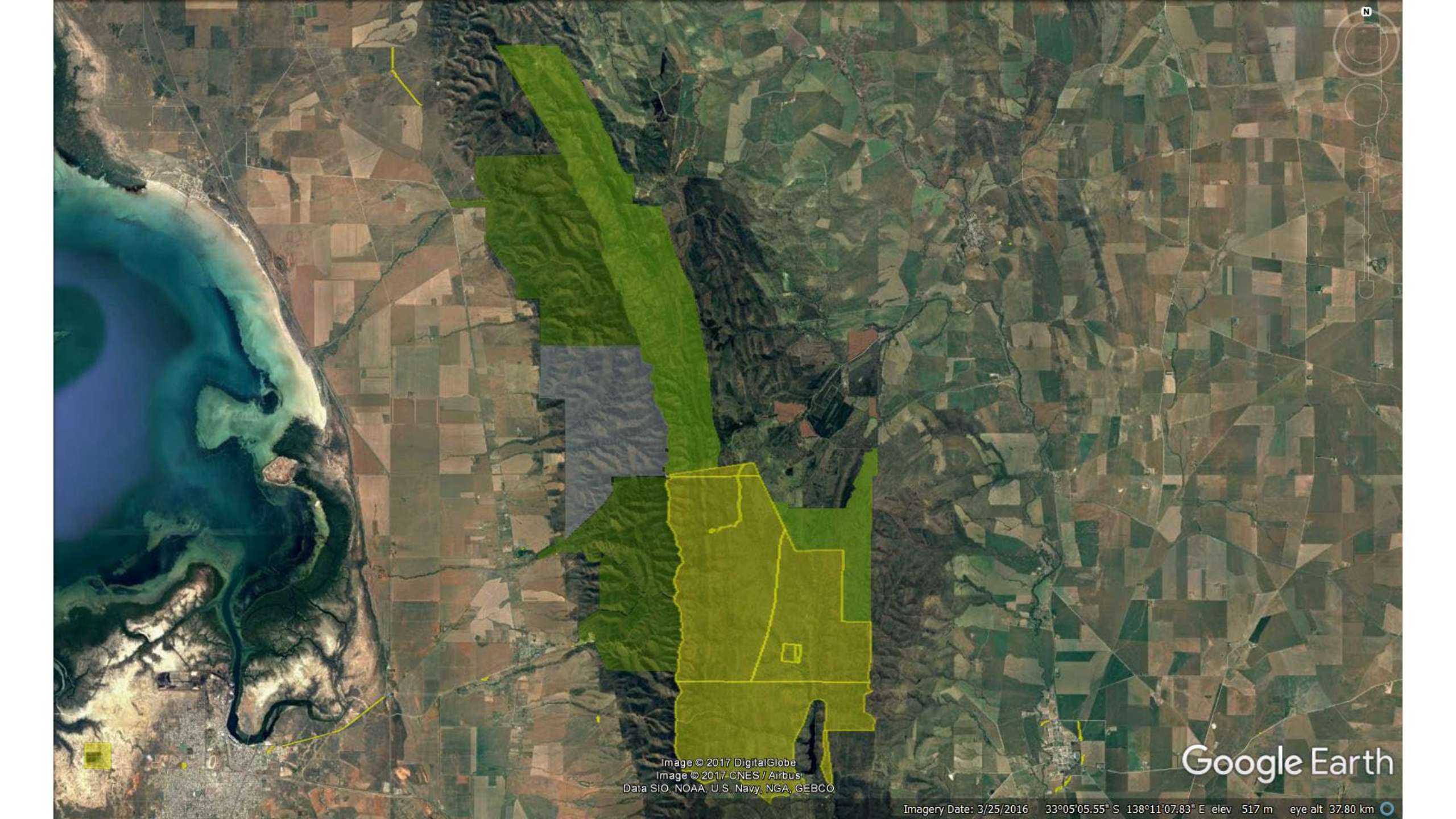


Image © 2017 DigitalGlobe  
Image © 2017 CNES / Airbus  
Data SIO, NOAA, U.S. Navy, NGA, GEBCO

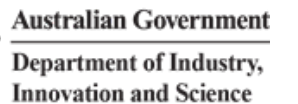
Google Earth

Imagery Date: 3/25/2016 33°05'05.55" S 138°11'07.83" E elev 517 m eye alt 37.80 km



## Partnership

- Southern Flinders Tourism Investment Readiness Planning commenced 2016;
- Building Better Regions Funding application lodged in December 2019, with the Foundation for National Parks and Wildlife as the applicant;
  - Confirmed \$5M from the South Australia Government through Parks 2025 in March 2020;
- On the 9 June 2020 the Commonwealth announced the successful BBRF application and further \$5M to bring the project value to \$10M;
- MOU adopted by councils in principle and to be confirmed with RDA Yorke and Mid North, FNPW, DEW, Nukunu Wapma Thura and Northern & Yorke Landscapes Board;
  - Remarkable Southern Flinders Project Governance Group established;
  - Remarkable Southern Flinders Ranges Local Government Alliance





Mount Remarkable NP

Mambray Creek visitor facilities upgrade



Mambray Creek Campground

Wirrabara Range CP

Telowie Gorge CP

Gorges Walks trails



Mount Remarkable NP Napperby Block

Willowie trails and day visitor facilities



EPIC mountain bike trail



Wirrabara trail and day visitor facilities



Spaniards Gully CP

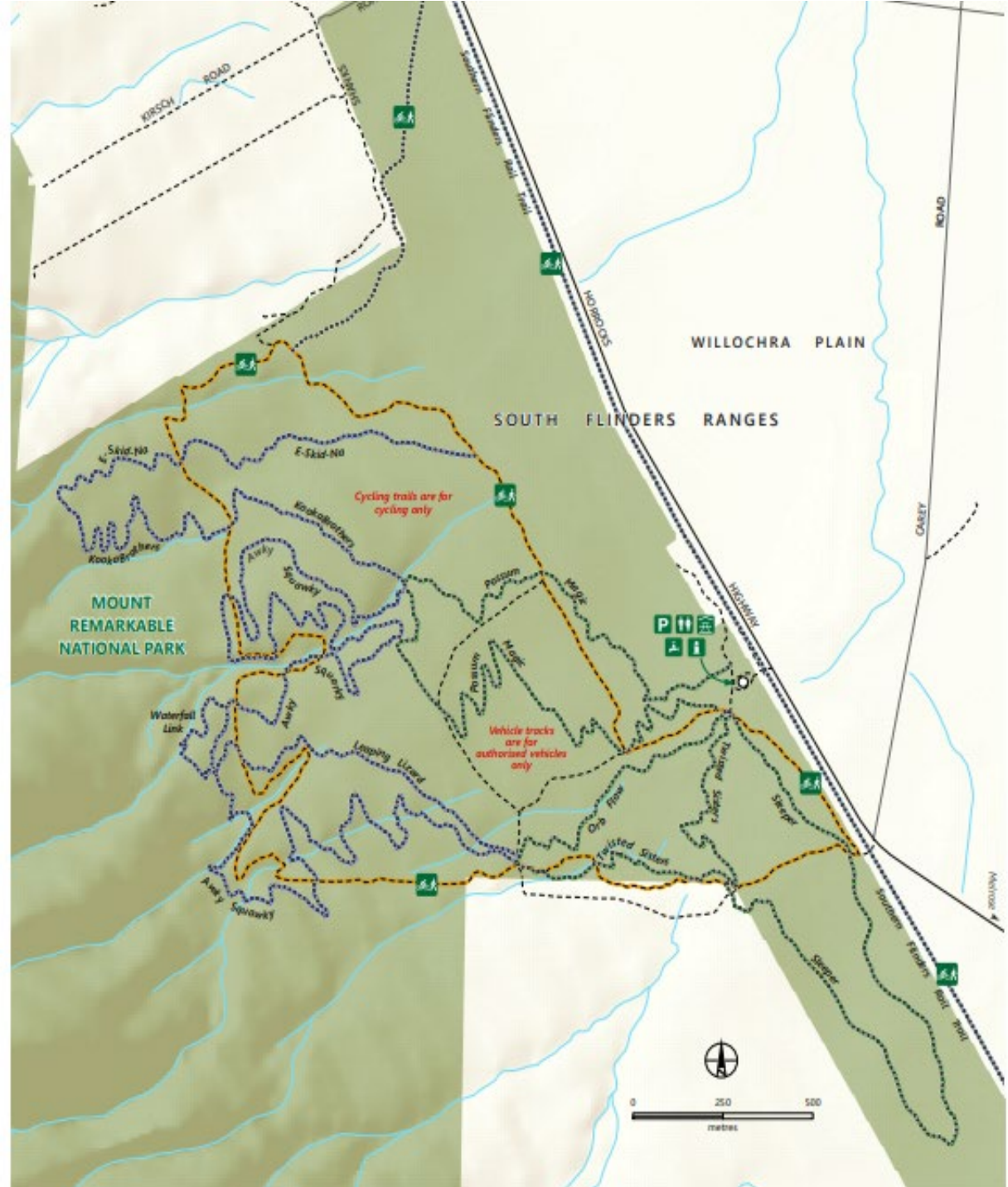
Beetaloo Reservoir



## Willowie Forest

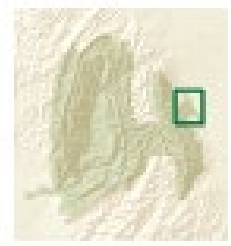
18 km of new mountain bike trails has been constructed north of Melrose in the Willowie Forest Area of Mount Remarkable National Park.

New and improved day visitor facilities are also part of this upgrade - picnic area, DIY bike repair station, accessible toilets and improvements to the existing carpark.



# Mount Remarkable National Park

## Willowie Forest



- Mount Remarkable National Park
- Sealed road
- Unsealed road
- Track Authorized vehicles only
- Trail
- Cycle trail - easy
- Cycle trail - intermediate
- Monitor Track Loop Shared use trail
- Southern Flinders Rail Trail Shared use trail
- Shared use trail
- Parking
- Picnic shelter
- Toilets
- Information
- Rain water



Trail	Total Strava Logged uses	Unique Visitors	Approximate total number of uses*
Possum Magic	1,566	250	4,055
Sleeper	653	261	1,691
Orb Flow	4296	732	11,126
Twisted Sisters	1544	393	3,998
Leaping Lizard	605	250	1,566
Awky Squawky	591	250	1,530
Kooka Brothers	1400	388	3,626
E Skid Na	1405	276	6,638

<https://www.trailforks.com/region/willowie-forest-46694/ridelogstats/>

\*Total Strava uses multiplied by 2.59. This was calculated by analysing known counter data and correcting against strava across AMLR trails and averaged across different types of trail



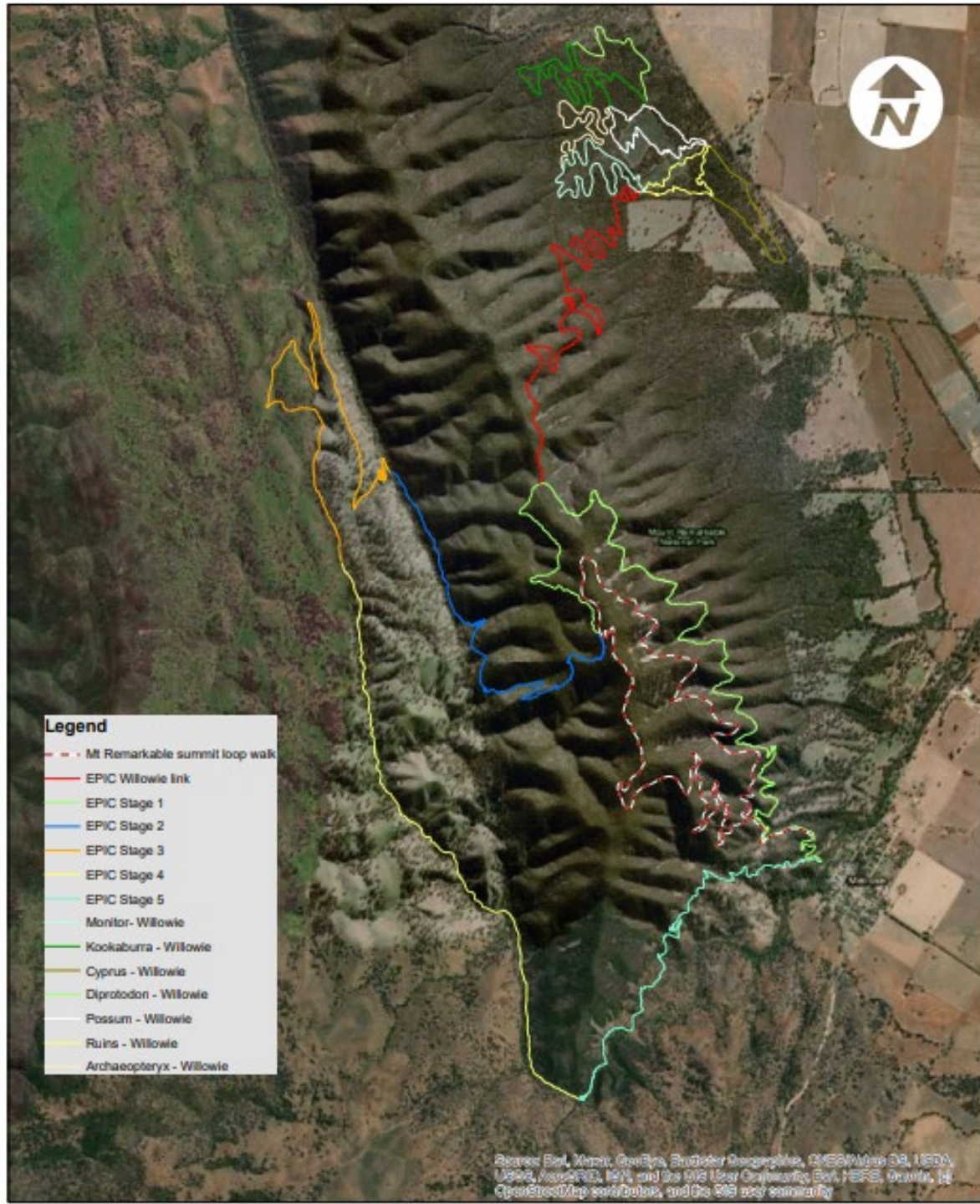
## Epic Trail

The Mount Remarkable Epic Trail will deliver a long distance, 'back-country' mountain biking trail.

The trail will pass through Mount Remarkable National Park and traverse both public and private land.

Over 30 km of the 42 km trail have been completed

This standout Australian trail will be completed in winter 2023.





## Mambray Creek

Upgrading the day and overnight visitor precinct at Mambray Creek, one of the most popular camping areas in South Australia.

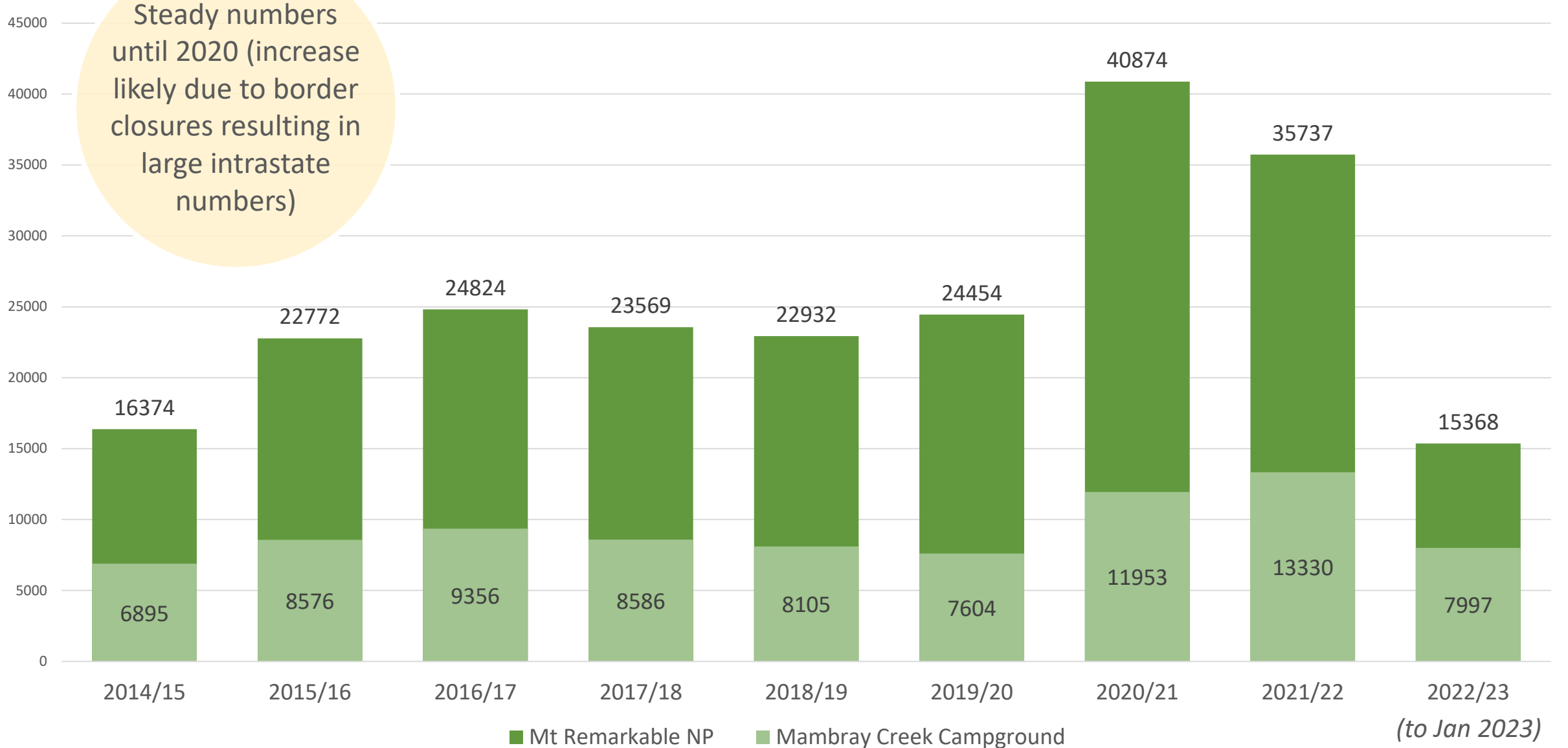
Construction commenced May 2023.

Camp  
visit [parke.sa.gov.au](http://parke.sa.gov.au)

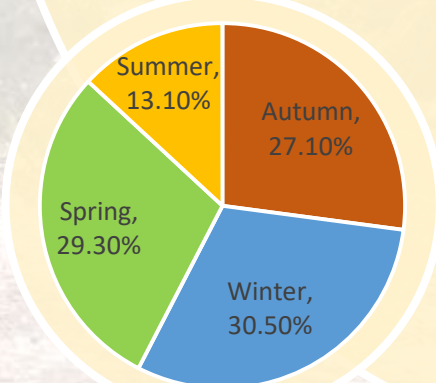
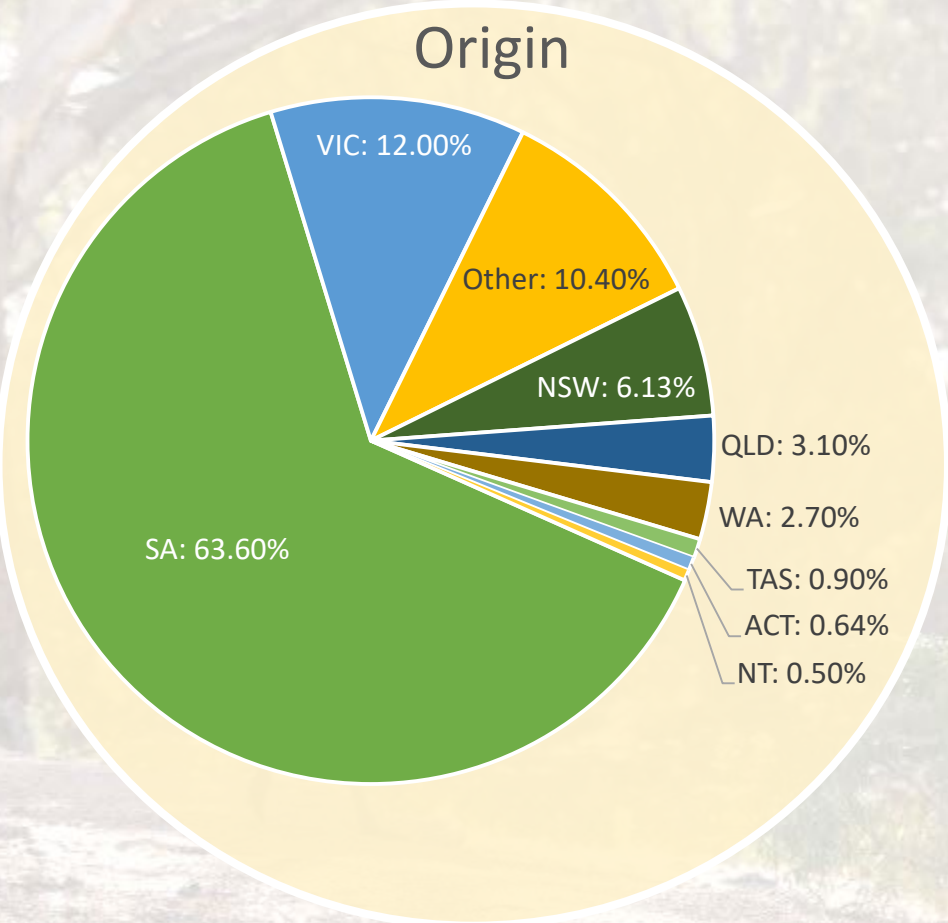




# Number of visitors to Mount Remarkable NP, including Mambray Creek Campground



# Mambray Creek Campground visitor data



Total visitors between 2014/15 and 2021/22

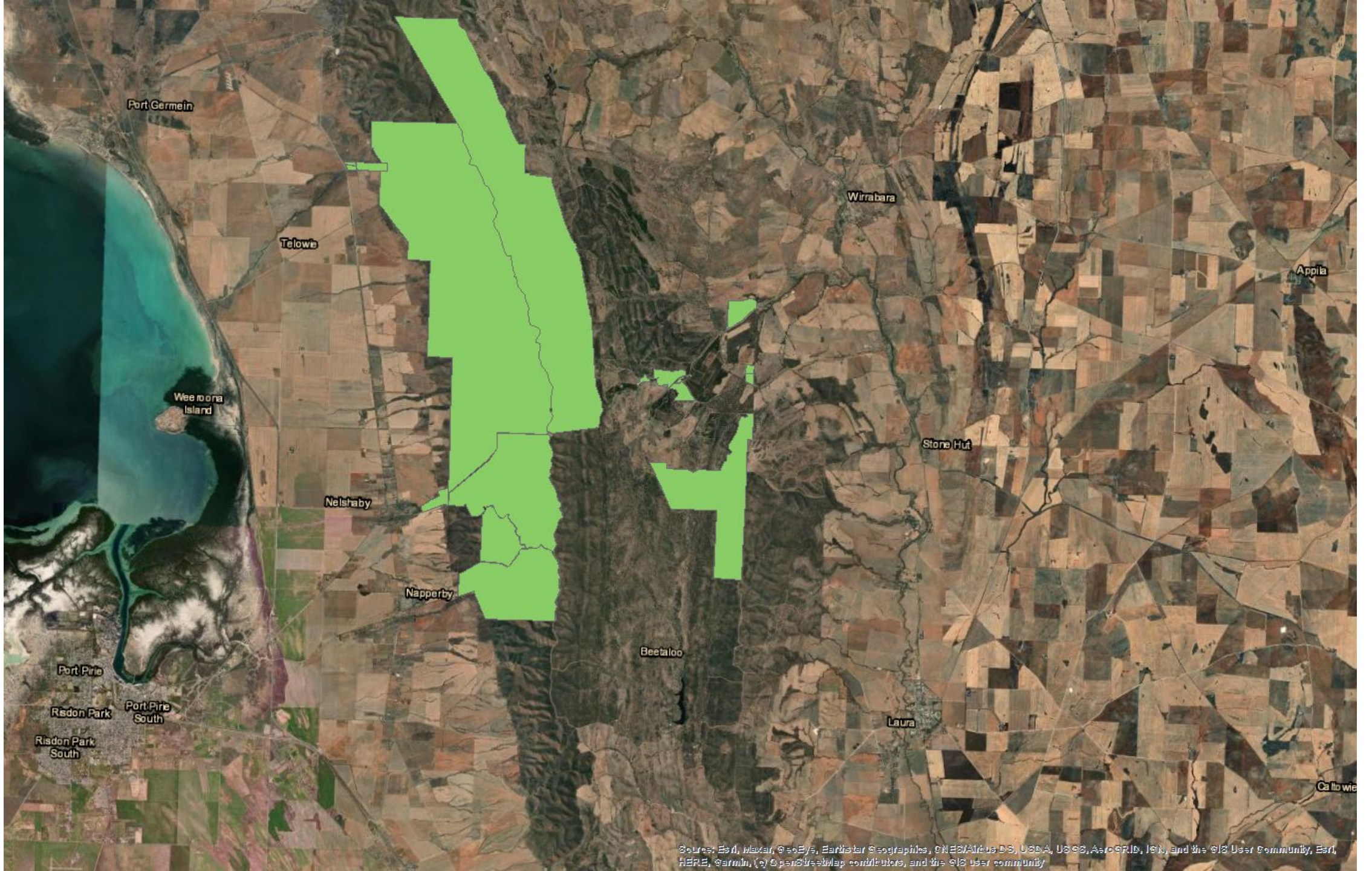


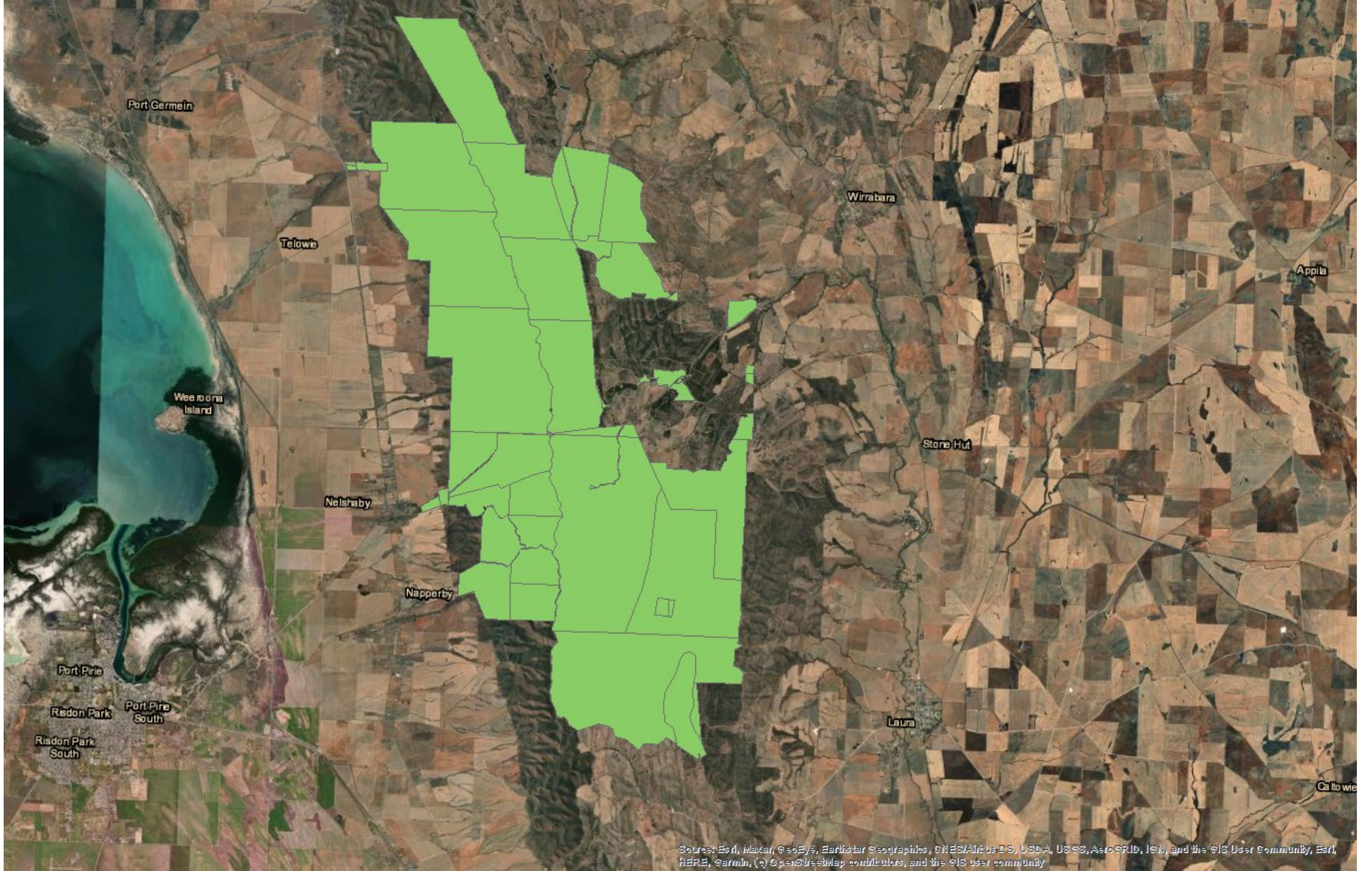
# Wapma Thura-Southern Flinders Ranges National Park

A new national park has been established, connecting existing parks in the southern area of the region.

Includes Spaniards Gully Conservation Park, Telowie Gorge Conservation Park, Wirrabara Range Conservation Park, Napperby Block of Mt Remarkable National Park, Ippinitchie Campground and will also encompass Beetaloo Reservoir and Forestry SA Land known as Mt Ellen block.

A co-management arrangement for the new national park will be established with Nukunu Traditional Owners.





Source: Esri, DeLorme, GeoEye, Earthstar Geographics, CNES/Airbus DS, USDA, USGS, AeroGRID, IGN, and the GIS User Community, Esri, HERE, Garmin, © OpenStreetMap contributors, and the GIS User Community

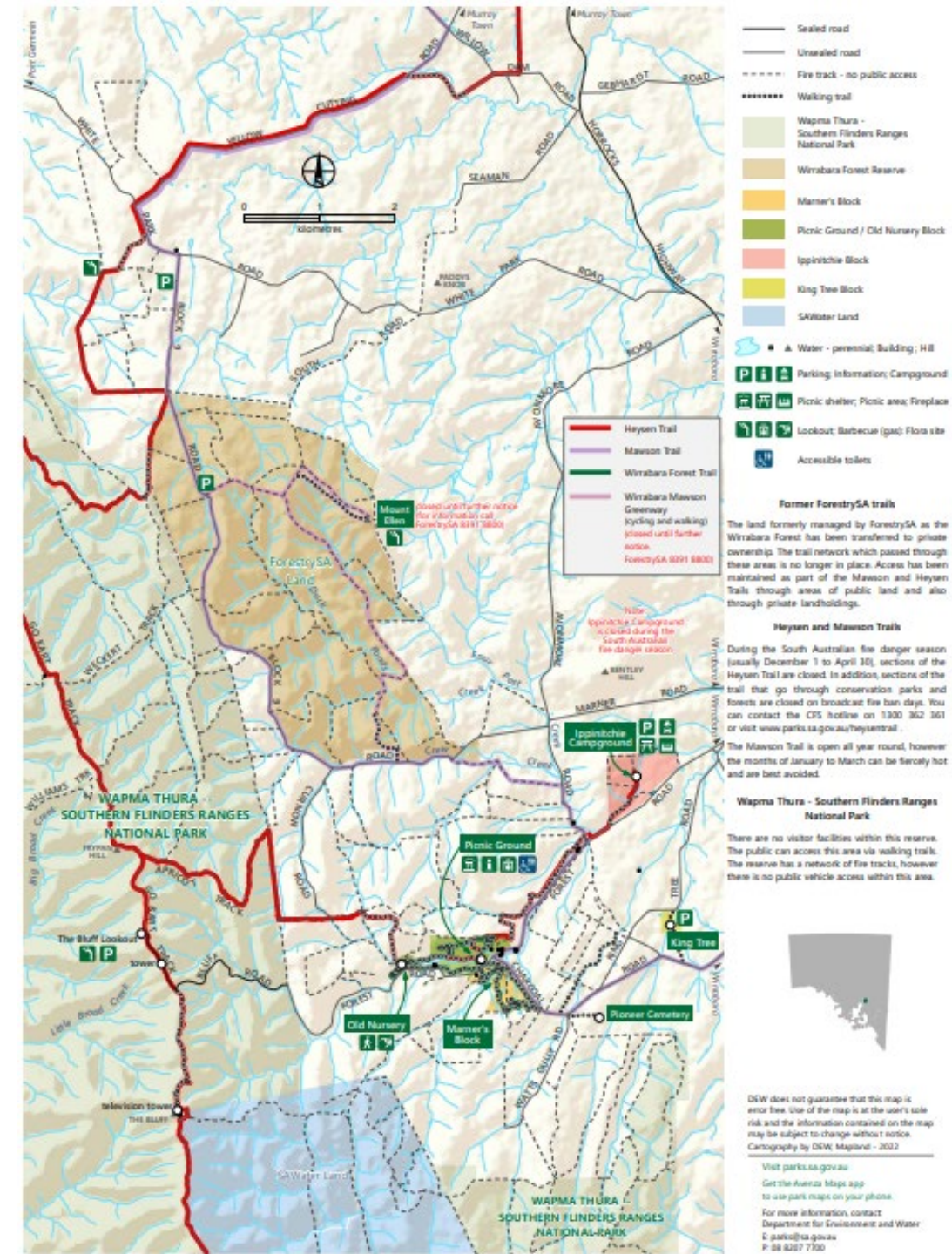


## Wirrabara Day Visitor Facilities

New and improved day visitor facilities and car parking has been completed.

Contemporary new picnic shelters, BBQ facilities, and accessible toilets providing a great stop over and community recreation space.

Supports the new lookout at The Bluff (built by DCMR).



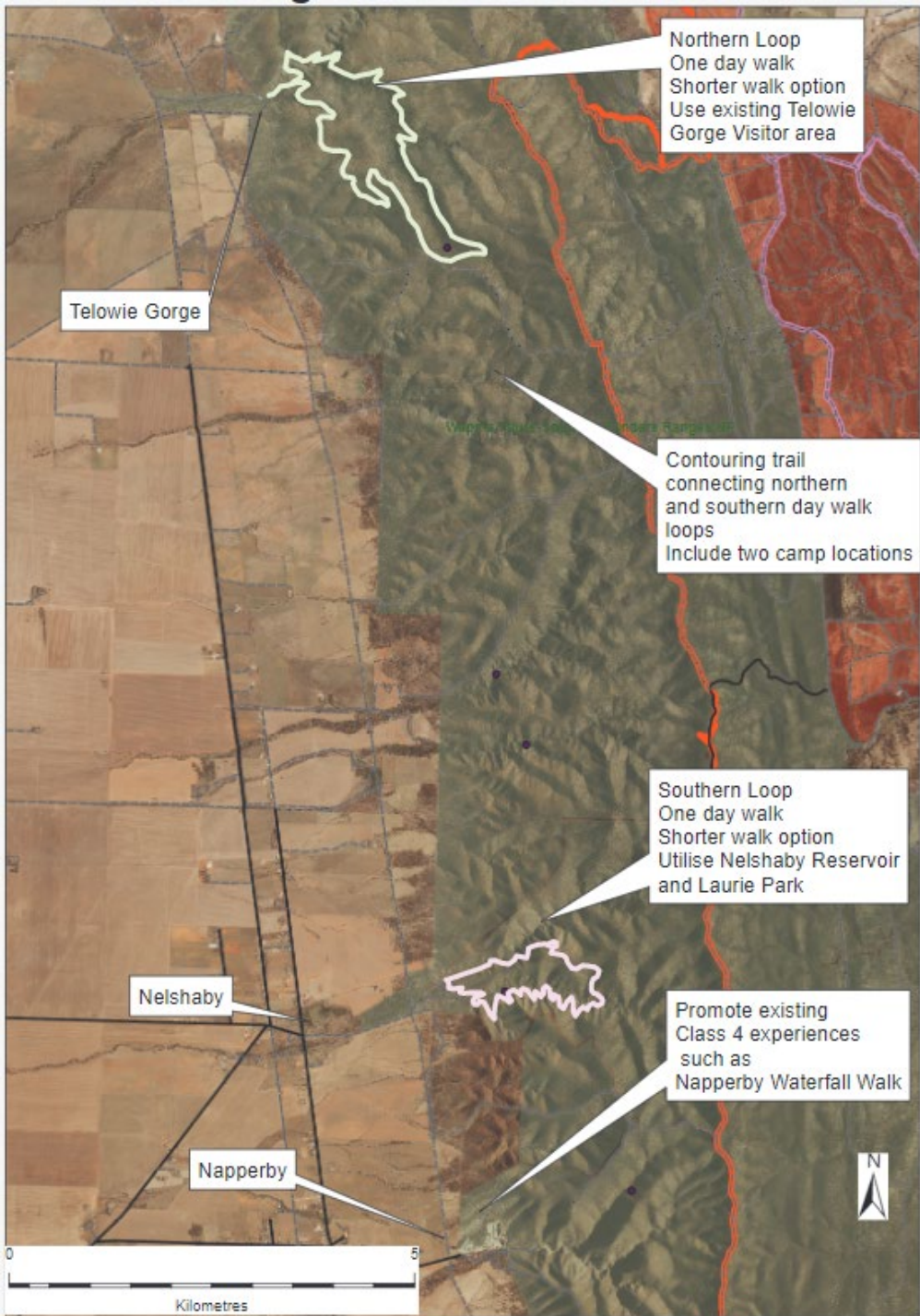




## Gorges Walk

The Gorges Walks will create new walking experiences by connecting the gorges of the Southern Flinders Ranges and connecting with the existing Heysen Trail.

A spectacular weekend walk (or more!) for experience seekers.



# Gorges Walk

A modular trail network featuring:

- Two looped circuit trails, suitable for a single day walk, commencing from new trailheads to be installed at Telowie Gorge and Nelshaby Reservoir.
- A connecting trail to span the hill face between the two day walks to enable a three day, two night walk. This trail will showcase the beauty of the region and will provide views into the gorges or take walkers into the gorges at locations which have previously been inaccessible.

Designed to Australian Standard for Walking Trail Classification (AS2156.1) Class 4, however, there may be desire to construct lower classification trails around key nodes to enhance the user experience.

Both loop trails feature a shorter 'out and back' experience, leveraging a natural lookout or scenic area. Class 3 if possible.

Craig Nixon  
National Parks and Wildlife Manager  
Yorke and Mid North Region  
E: [craig.nixon@sa.gov.au](mailto:craig.nixon@sa.gov.au)  
M: 0427 600 331

