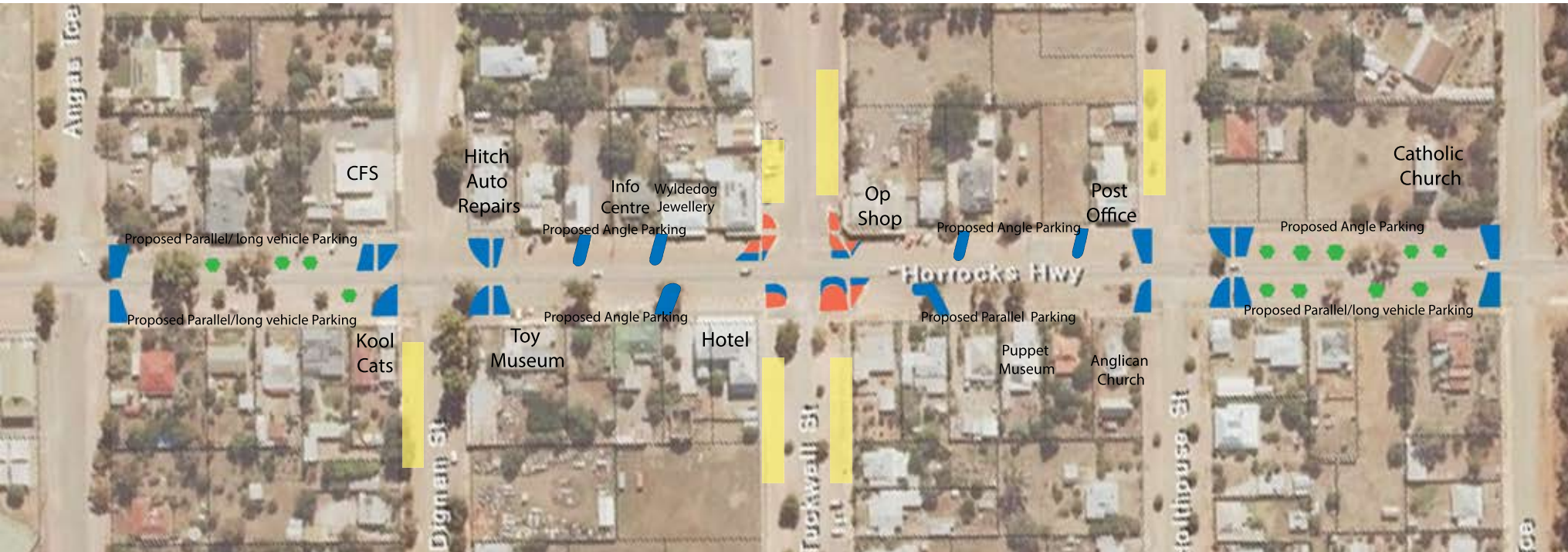


# Wilmington Main Street Rejuvenation Plan Final Design



Dark blue - new/extended protuberances

Orange - existing protuberances

Green - new large established trees

Yellow - long vehicle parking zone(signed but unmarked)

Note: This design will include diagonal garden beds in between Dignan St and Holthouse St (widths ranging from 2-10m with planted with low - medium growing native plants and shrubs, in garden beds and space for up lighting of existing mature trees plus possibility of sculptures. Corner protuberances will be filled with paddock rocks and planted with low growing hardy plants, no irrigation. Established trees will be placed between Angus St to Dignan St and Holthouse St to Cudmore Tce and will not be irrigated. Community committment will involve manual watering of established trees and corner protuberances, ongoing weeding and pruning of all garden beds.